

# MITT Email and Accounts Access



MANITOBA INSTITUTE OF  
TRADES & TECHNOLOGY

# Agenda

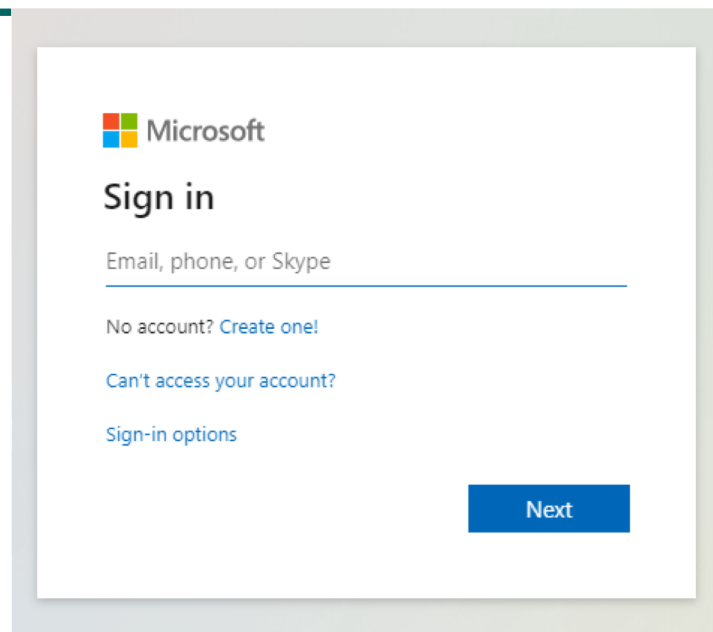
---

1. Introduction to Student Email addresses
2. How to access / log in to Student Email
3. Introduction to the MyLearning Platform
4. The Student Portal
5. How to seek help



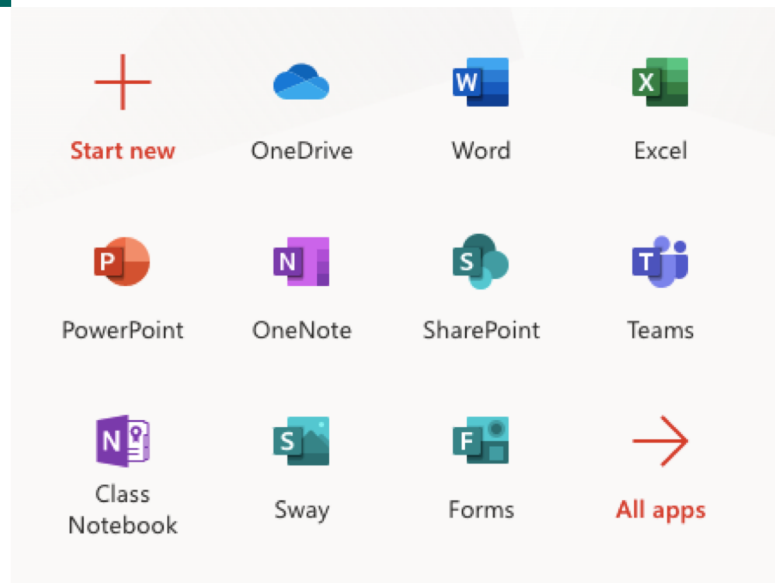
# Student Email

- All students will receive an @student.mitt.ca email address
- You'll be emailed log in instructions (sent to your personal account)
- This will be one of the primary ways MITT and your instructors will contact you.
- You will also still need to check your personal email address that you have been using to communicate with MITT



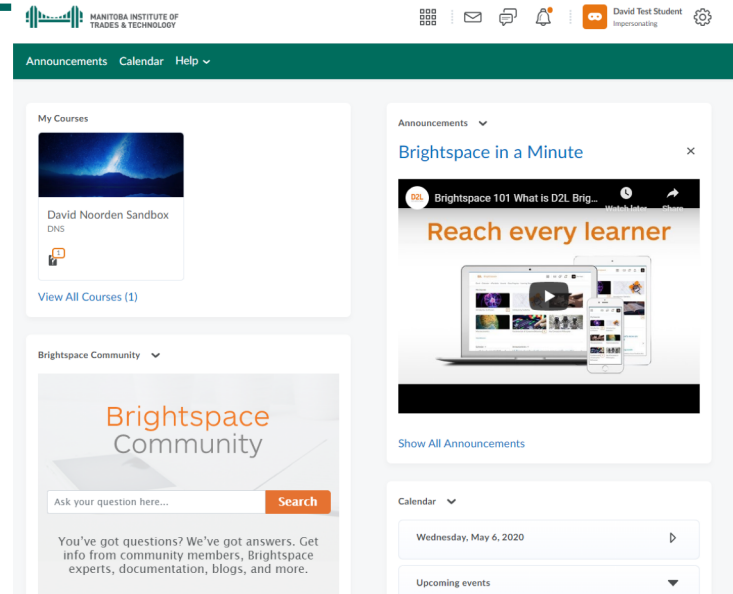
# Access Student Email

- To log into your email address you'll go to <http://student.mail.mitt.ca>
- Your MITT email will provide you with access to Office 365 which includes
  - Word Online
  - Excel Online
  - PPT Online
  - Microsoft Teams



# MyLearning Platform

- MyLearning is a web-based learning management system.
- Students will be asked to use this platform for the program, including the following:
  - Access course content
  - Submit Assignments
  - View Grades
  - Other academic tasks



# How to Access MyLearning

- To use the MyLearning Platform, you log in at <http://mylearning.mitt.ca>
- Use your @student.mitt.ca email account
- Check out our Introduction to MyLearning presentation!



Welcome to mitt

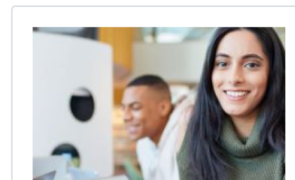
Log in to view your courses, explore tools and features, and customize your eLearning experience.

Username \*

Password \*

Log In

[Forgot your password?](#)



D2L | Brightspace

# MITT Portal

---

- The student portal is used by the Enrolment Services department as an official record when it comes to your personal contact info / SIN# / taxes

<https://my.mitt.ca/students/login.asp>

- Help?! Access concerns can be addressed using the [student portal help request form](#)

## CURRENT STUDENTS

Fee Payment

Academic Schedule

Graduation and Convocation

Important Dates

International Student Health Insurance

Program Schedules

[Student Portal](#)

Student Portal Instructions

[Student Portal Access Help Request](#)

Supply Lists

Textbooks

T2202 Tuition and Education Tax Credit Receipt

Fort Garry Child Care Centre Co-op

Video Lectures

[www.mitt.ca](http://www.mitt.ca)



# How to Get Help!

- If you have any *technical* issues with your email account, 365 or MyLearning, contact [MyLearning@mitt.ca](mailto:MyLearning@mitt.ca)

## Examples of technical issues

- Haven't received MITT email account instructions
- Can't log into accounts
- The email system has a password reset option on the site. Please use this before emailing us!

### Microsoft

## Get back into your account

### Who are you?

To recover your account, begin by entering your user ID and the characters in the picture or audio below.

User ID:

Example: user@contoso.onmicrosoft.com or user@contoso.com



Enter the characters in the picture or the words in the audio.

Next

Cancel

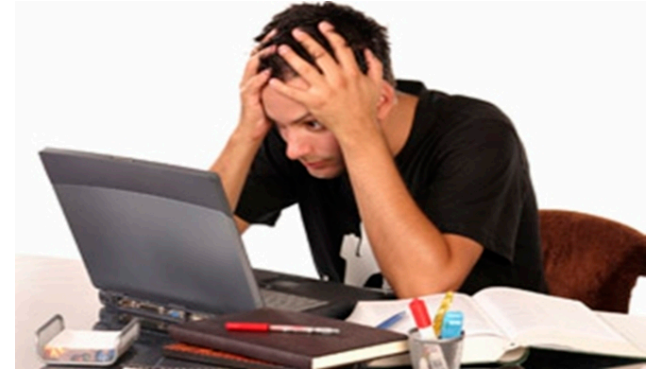


# How to Get Help!

---

- If you are having (non-technical) difficulty learning in an online course environment, ask your instructor or contact Joel Trenaman, Student Advisor, Online Learning.

[StudentServices@mitt.ca](mailto:StudentServices@mitt.ca)



Theconversation.com

# Summary

---

- Activate your MITT email address.
  - You have free access to Office 365 online
  - Check this email address regularly
- MITT has introduced MyLearning, an online course tool – check it out
  - Your instructor(s) will be using it regularly
- Tech support [mylearning@mitt.ca](mailto:mylearning@mitt.ca)



What am I supposed to do with all of this information?

[www.doctorramey.com](http://www.doctorramey.com)