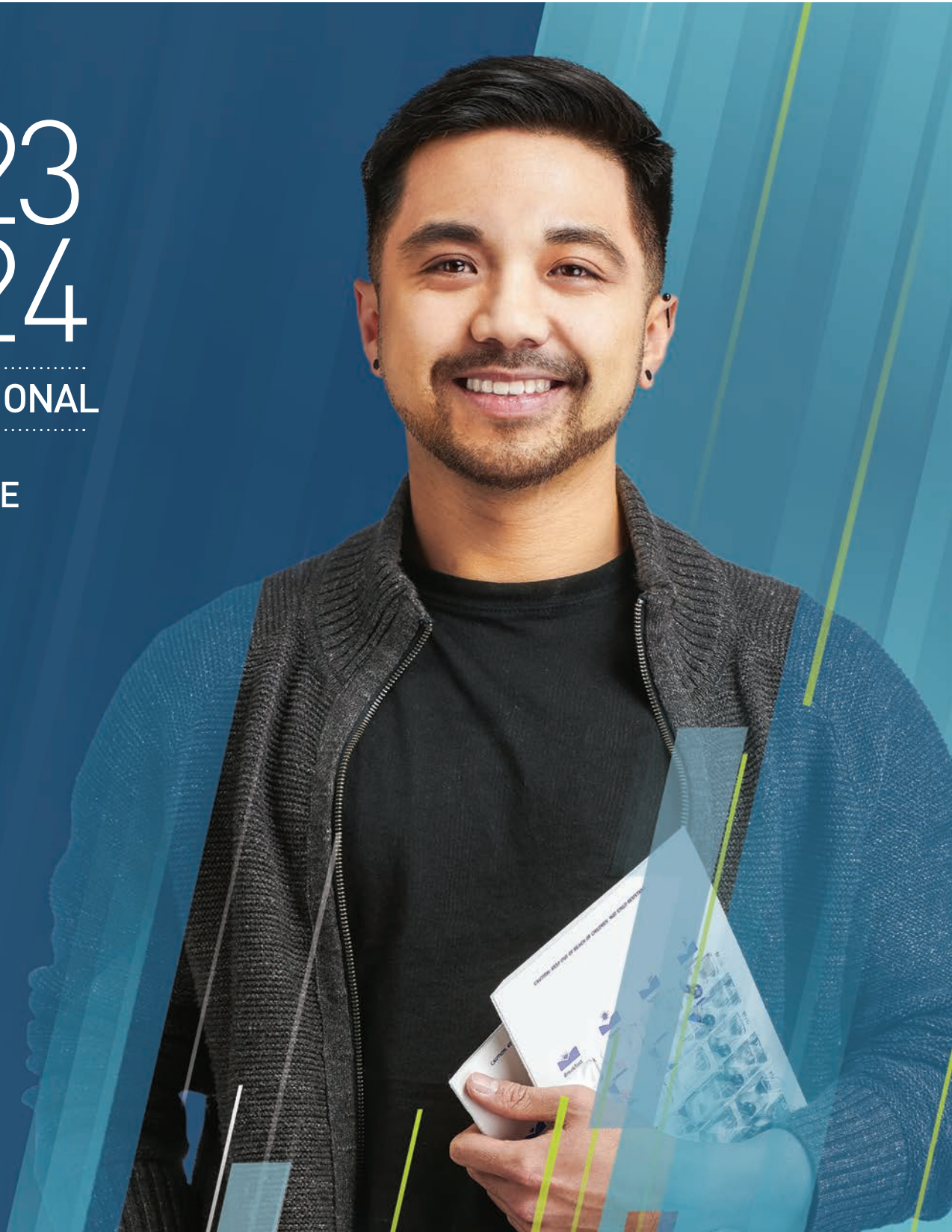




MANITOBA INSTITUTE OF
TRADES & TECHNOLOGY

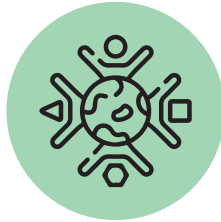
2023
2024

INTERNATIONAL
PROGRAMS
AT A GLANCE



WHY MITT

Offering more than 30 certificate, diploma, and post-graduate programs, MITT gives you the in-demand skills you need to succeed at any stage of your career. Our industry-expert instructors, work-integrated learning, and robust academic support create a student experience like no other. With employability skills embedded in every program and strong industry partnerships, you'll be connected with employers while you're at MITT and after graduation.



INCLUSIVE ENVIRONMENT

MITT offers a safe and inviting learning environment through small campuses and dedicated cohorts. Students from diverse backgrounds, cultures, and life experiences create community through campus events and student groups.



CAREER-FOCUSED SUPPORT

MITT is the only college in Manitoba that integrates employability skills training into every program. Our Career and Employment Services team provides the Bridging to Work series that gives you a career toolkit to transition effectively into the workforce.



EXPERIENCED INSTRUCTORS

MITT's instructors are industry experts with years of experience. They share their immense knowledge and provide one-on-one guidance, building your skills and confidence so you are career-ready after graduation.



AFFORDABLE TRAINING

Tuition at MITT is competitive. With a low cost of living compared to other Canadian cities, Winnipeg is an affordable place to live and study. MITT scholarships are available and can help cover tuition and living expenses.



WORK-INTEGRATED LEARNING

MITT offers immersive learning environments where you will practice your skills in modern simulation labs using state-of-the-art industry tools and equipment. Many programs also include a work practicum experience of up to 21 weeks with a local employer.



EMPLOYED GRADUATES

At MITT, our mission is to get you career-ready. From hands-on training to our Bridging to Work sessions, we prepare you for the workforce today and give you the tools to be ready for the evolving needs of tomorrow. Our method speaks for itself—86% of our graduates say the education they received from MITT qualified them for their current job.

*source: 2022 Inshtrix survey of more than 500 MITT alumni.

MITT BY THE NUMBERS



30+ programs

Certificate, diploma, and post-graduate programs.



4,000+ students

Including secondary, post-secondary, language, and adult learners.



86 countries

With students applying to MITT.



88% currently employed

That's how many recently surveyed alumni said they were currently employed.*

*Results from 2022 Insightrix survey of more than 500 MITT alumni.



"The education, coupled with my previous experiences and on-campus volunteering, helped me land a job at MITT right after graduation."

- Holly, China, Leadership and Management



"The people here are very warm and friendly. In my opinion, the quality of life here is much better than the other cities that I have lived in."

- Anukul, Bangladesh, Client Service Specialist



"MITT has amazing staff, a positive and professional environment, and the best instructors ever!"

- Yaroslava, Ukraine, Leadership and Management



THE STUDENT JOURNEY

Your student journey at MITT, from application to graduation to starting your career.



MANITOBA AND WINNIPEG

MANITOBA


- > Canada's fifth most populated province
- > More than 1.28 million citizens
- > Affordable cost of living: Rent in Winnipeg, on average, is more than 46 per cent less than Toronto
- > Home to a variety of Indigenous communities
- > Manitoba's information and communication technology (ICT) industry employs more than 9,300 full and part-time workers*

WINNIPEG

- > Population of more than 749,000
- > Culturally diverse with more than 100 languages spoken
- > Listed as one of Time Magazine's "World's Greatest Places" (2021)
- > Most Intelligent Community – Intelligent Community Forum (2021)
- > Home to large corporations in industries including aerospace, advanced manufacturing, agribusiness, pharmaceuticals, and tech



By plane, Winnipeg is just three hours from Vancouver, two and a half hours from Toronto, and less than two hours from Chicago.

Canadian Museum for Human Rights 

BUDGET CONSIDERATIONS**



SUPPLIES
\$140 to \$620



TEXTBOOKS
\$225 to \$1,750***



TRANSIT
\$85 to \$110
(per month)



HEALTH INSURANCE
\$680 to \$990
(mandatory)



FOOD
\$450 to \$600
(per month)



HOUSING
\$800 to \$1,200
(per month)

* Tech Manitoba, Manitoba Information and Communication Technology Industry Labour Market Information Report, September 2021

** Costs are estimated and may be subject to change.

*** For more information, visit MITT.ca/current-students/textbooks



PROGRAMS	DURATION (all programs are full time)	INTAKES ¹	WORK INTEGRATED LEARNING (WIL) ²	CREDENTIALS	ACADEMIC IELTS REQUIREMENTS ³ MITT accepts other English language proficiency test scores. Please refer to MITT.ca/proficiency for details.
APPLIED BUSINESS					
Applied Leadership	1 year (12 months)	Winter	No WIL	Post-Graduate Diploma	6 overall, minimum 5.5 in each band
Business Administrative Assistant	1 year (10 months)	Fall, Winter	Practicum: 7 weeks	Certificate	6 overall, minimum 5.5 in each band
Business Management	1 year (12 months)	Fall, Winter, Spring	No WIL	Post-Graduate Certificate	6 overall, minimum 5.5 in each band
Global Supply Chain Management	2 years (16 months)	Fall	No WIL	Post-Graduate Diploma	6.5 overall, minimum 5.5 in each band
Human Resources Learning and Development	2 years (16 months)	Spring	See website for updates: MITT.ca/human-resources	Post-Graduate Diploma	6.5 overall, minimum 5.5 in each band
International Business	1 year (12 months)	Fall, Spring	No WIL	Post-Graduate Diploma	6 overall, minimum 5.5 in each band
DESIGN AND MANUFACTURING TECHNOLOGIES					
CAD Technician	1 year (10 months)	Fall, Winter	Applied Project	Certificate	6 overall, minimum 5.5 in each band
Electronics Technician	1 year (10 months)	Fall	Practicum: 4 weeks	Certificate	6 overall, minimum 5.5 in each band
Graphic and Print Technician	1 year (10 months)	Fall	Practicum: 4 weeks	Certificate	6 overall, minimum 5.5 in each band
HEALTH CARE					
Health Care Aide and Personal Support Worker	1 year (8 months)	Fall, Winter	Practicum: 8 weeks	Certificate	6.5 overall, minimum 6 in each band (only IELTS accepted)
Medical Office Assistant	1 year (10 months)	Fall, Winter	Practicum: 7 weeks	Certificate	6.5 overall, minimum 5.5 in each band
Pharmacy Technician	2 years (20 months)	Fall	Practicums: Year 1: 2 weeks Year 2: 11 weeks	Diploma	Refer to current language standards at napra.ca
Rehabilitation Assistant	1 year (12 months)	Fall	Practicum: 12 weeks	Certificate	6.5 overall, minimum 5.5 in each band
HUMAN SERVICES					
Early Childhood Education	2 years (20 months)	Fall	Practicums: Year 1: 7 weeks Year 2: 14 weeks	Diploma (qualifies for Early Childhood Educator II certification)	6.5 overall, minimum 6 in each band
Hospitality Management	2 years (20 months)	Fall	Practicums: Year 1: 7 weeks Year 2: 14 weeks	Diploma	6 overall, minimum 5.5 in each band
Hotel and Hospitality Services	1 year (10 months)	Fall, Winter	Practicum: 7 weeks	Certificate	6 overall, minimum 5.5 in each band
Client Service Specialist	1 year (10 months)	Fall, Winter	Practicum: 4 weeks	Certificate	6 overall, minimum 5.5 in each band
Sales and Event Coordinator	1 year (10 months)	Fall (Nov), Spring	Practicum: 4 weeks	Certificate	6 overall, minimum 5.5 in each band
INFORMATION AND COMMUNICATION TECHNOLOGY					
Network and Systems Administrator Advanced Certificate ⁵	1 year (12 months)	Fall, Winter, Spring	No WIL	Advanced Certificate	6 overall, minimum 5.5 in each band
Network and Systems Administrator Diploma ⁵	2 years (16 months)	Fall, Winter, Spring	Practicum: 15 weeks	Diploma	6 overall, minimum 5.5 in each band
Network Security	6 months at MITT 10 months at U of W	Fall, Winter	No WIL	Joint Diploma with University of Winnipeg	Visit pace.uwinnipegcourses.ca/international-stu
Software Developer	1 year (12 months)	Fall, Winter	Practicum: 7 weeks	Diploma	6 overall, minimum 5.5 in each band
SKILLED TRADES					
Automotive Service Technician	1 year (8 months)	Fall, Winter	Practicum: 7 weeks	Certificate (Apprenticeship accredited Level 1)	6 overall, minimum 5.5 in each band
Culinary Arts and Design	1 year (10 months)	Fall, Winter	Practicum: 4 weeks	Certificate (Apprenticeship accredited Level 1)	6 overall, minimum 5.5 in each band
Electrical Applications	1 year (10 months)	Fall, Winter	No WIL	Certificate (Apprenticeship accredited Level 1 and 2)	6 overall, minimum 5.5 in each band
Hairstyling	1 year (12 months)	Fall, Winter	Applied Project	Certificate (Apprenticeship accredited Level 1)	6 overall, minimum 5.5 in each band
Industrial Welding	1 year (10 months)	Fall, Winter	Capstone Project	Certificate (Apprenticeship accredited Level 1)	6 overall, minimum 5.5 in each band

Program details are subject to change.

Visit [MITT.ca/programs](https://www.mitt.edu/programs) for the latest information.

TO APPLY VISIT [MITT.CA/APPLY](https://www.mitt.edu/apply)

ENGLISH FOR ACADEMIC PURPOSES REQUIREMENTS ³ (MITT English Language Institute)	PROGRAM ENTRANCE REQUIREMENTS ³ Minimum entrance requirement for all post-secondary programs is high school/secondary graduation from a recognized curriculum. Minimum entrance requirement for post-graduate programs is an undergraduate degree or diploma from an accredited institution (2 years of full-time accredited course work may also be considered). Please refer to MITT.ca/admissions for detailed requirements.	Tuition ^{4, 6}
		International
Level 4	Minimum entrance requirements apply (no program-specific requirements)	\$18,150
Level 4	Senior Level Math and First Language Literature (or equivalents)	\$17,300
Level 4	Minimum entrance requirements apply (no program-specific requirements)	\$18,150
Level 5	Diploma or degree in business, commerce or a related discipline. Credits in related course topics or subjects may be considered. Completion of the Business Management program at MITT is also accepted for admission.	\$24,200 ^a
Level 5	Diploma or degree preferably in the humanities, social sciences, business or education. Credits in related course topics or subjects may be considered. Completion of the Business Management program at MITT is also accepted for admission.	\$24,200 ^a
Level 4	Diploma or degree preferably in preferably in business, commerce or a related discipline. Credits in related course topics or subjects may be considered. Completion of the Business Management program at MITT is also accepted for admission.	\$18,150
Level 4	Senior Level Math and First Language Literature (or equivalents)	\$17,300
Level 4	Senior Level Math and First Language Literature (or equivalents)	\$17,300
Level 4	Senior Level Math and First Language Literature (or equivalents)	\$17,300
N/A	Senior Level Math, First Language Literature, and Biology (or equivalents)	\$13,400
Level 5	Senior Level Math and First Language Literature (or equivalents)	\$17,300
N/A	Senior Level Math and First Language Literature, Biology and Chemistry (or equivalents) with a minimum grade of 60 per cent in each	\$38,500 ^a
Level 5	Senior Level Math, First Language Literature (or equivalents), and one of Biology, Chemistry or Physics	\$17,900
Level 5	Senior Level Math and First Language Literature (or equivalents) (First Language Literature with a minimum grade of 65 per cent)	\$34,600 ^a
Level 4	Senior Level Math and First Language Literature (or equivalents), as well as 1,000 hours experience in hospitality sector or completion of MITT Hotel and Hospitality Services Certificate	\$34,600 ^a
Level 4	Senior Level Math and First Language Literature (or equivalents)	\$17,300
Level 4	Senior Level First Language Literature (or equivalents)	\$17,300
Level 4	Senior Level First Language Literature (or equivalents)	\$17,300
Level 4	Senior Level Math and First Language Literature (or equivalents), and a third senior academic level course with a minimum grade of 60 per cent in each, and with a minimum 70 per cent average across all three. 55 per cent or higher score on Technology Programs Aptitude Test. (TPAT) (test info available at MITT.ca/softwaredeveloper)	\$18,550
Level 4	Senior Level Math and First Language Literature (or equivalents), and a third senior academic level course with a minimum grade of 60 per cent in each, and with a minimum 70 per cent average across all three. 55 per cent or higher score on Technology Programs Aptitude Test. (TPAT) (test info available at MITT.ca/softwaredeveloper)	\$20,050 ^b
Students/programs/network-security-diploma		
Level 4	Senior Level Math and First Language Literature (or equivalents), and a third senior academic level course with a minimum grade of 60 per cent in each, and with a minimum 70 per cent average across all three. 55 per cent or higher score on Technology Programs Aptitude Test. (TPAT) (test info available at MITT.ca/softwaredeveloper)	\$18,550
Level 4	Senior Level Math and First Language Literature (or equivalents)	\$17,300
Level 4	Senior Level Math and First Language Literature (or equivalents)	\$17,300
Level 4	Senior Level Math and First Language Literature (or equivalents)	\$17,300
Level 4	Senior Level Math and First Language Literature (or equivalents)	\$17,300
Level 4	Senior Level Math and First Language Literature (or equivalents)	\$17,300

¹INTAKES
Programs may be offered in the day and/or evening. See website for more information:
[MITT.ca/programs](https://www.mitt.edu/programs)

²WORK-INTEGRATED LEARNING
Some programs may have a Work-Integrated Learning component that is not listed here. Please refer to the specific program page at [MITT.ca/programs](https://www.mitt.edu/programs) for complete details.

³REQUIREMENTS
Some programs may have additional entrance requirements. Please refer to the specific program page at [MITT.ca/programs](https://www.mitt.edu/programs) for complete details.

Students whose first language is not English or who were educated in a country where English is not the primary language will have to meet English language proficiency requirements. For information, please see [MITT.ca/proficiency](https://www.mitt.edu/proficiency). MITT also offers English for Academic Purposes classes. For information, please see [MITT.ca/eli](https://www.mitt.edu/eli).

⁴TUITION
Tuition is subject to change. Amounts presented here do not include additional student fees, textbooks, supply costs, or health insurance.

⁵NETWORK AND SYSTEMS ADMINISTRATOR
NSA is undergoing a review that may result in modifications to program design, duration and curriculum.

⁶SECOND YEAR TUITION
Tuition listed for 2-year programs is for both years. Rates listed here are estimates, based on 2023-2024 tuition rates. Fees are subject to change each year; approved rates for 2024-2025 will be available at [MITT.ca/tuition](https://www.mitt.edu/tuition) in Fall 2023.

LOCATIONS

130 Henlow Bay
Winnipeg, MB R3Y 1G4

7 Fultz Boulevard
Winnipeg, MB R3Y 1G4

1551 Pembina Highway
Winnipeg, MB R3T 2E5

English Language Institute
67 Scurfield Boulevard
Winnipeg, MB R3Y 1G4

GENERAL INQUIRIES

T 204 989 6500
E internationalrecruitment@mitt.ca

For program information, please visit [MITT.ca/programs](https://www.mitt.ca/programs)

HOURS OF OPERATION

Monday to Friday
8:30 a.m. to 4:30 p.m. CST

Connect with us



@MITTCanada
@MITTInternational

Visit [MITT.ca/global-team](https://www.mitt.ca/global-team) to connect with a representative in your area.

The Manitoba Institute of Trades and Technology acknowledges that it is situated on Treaty 1 territory and the traditional territory of Anishinaabeg, Cree, Dakota, and Dene Peoples, and the homeland of the Metis Nation.



Join our free events

MITT offers regularly facilitated events featuring our programs, staff, and instructors. Join us to connect face-to-face from around the globe and have your questions answered. Subscribe to MITT emails using the QR code to receive notifications about our webinars.

